



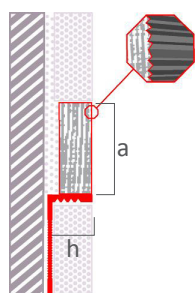
## Novostil® MaxiKenya



Novostil® MaxiKenya is a versatile profile, made of Maxi (exclusive material of Emac®) and anodized aluminium. This profile has an attractive striated face side, similar to wood, which makes it perfect to any environment. Novostil® MaxiKenya combines technology, sustainability, beauty and safety just in one product.

Model registered as community design  
Nº 1.073.340 - 0003

### General Features



Material:	Maxi + Anodized Aluminium
Length:	8ft2in. / 2,5 l.m.
Dimensions:	h: 3/8" / 10 mm. a: 1-11/16" / 27 mm.
Packaging:	20 u./box *Covered with protective film
Finishes:	127 - Maxiceniza (*) 129 - Maxicanela (*) * Available in combination with anodized silver matte or mirror bright.



### Applications

Novostil® MaxiKenya is a versatile profile suitable for indoor and outdoor tilings. Its usual application is as decorative listello. The MaxiKenya range is especially recommended for outdoor installations because it has an excellent weatherability and remains unalterable to sun exposure.

### Technical features and tests

Novostil® MaxiKenya is made of two high-performance materials: Maxi and anodized aluminum. Maxi is an exclusive material developed by Emac®. Due to its innovative character, Maxi has been subjected to multiple tests in different Technological Institutes to certify its properties. The main features of these materials are:

Aluminum

Alloy:	6063 (AA and ASTM) L-3441 (UNE 38-301-89)
Fire resistance:	M0 (UNE 23-727-90)
Abrasion resistance:	Very good
Lightfastness:	Excellent
Appearance and color:	EN 12373-1

(MAXI) Maxi



Water absorption	Absorption very low, high dimensional stability. Preserves its weight after drying.		
Fire reaction	M1 Classification	UNE 23.727-90 1R	AITEX
Abrasion resistance	Up to 2200 cycles without variation		
Surface resistance to staining	Resistance to acetone, coffee at 80 ° C, bitumen, hydrogen peroxide and sodium hydroxide 30% 25%. Acetone: blistering and surface degradation. Rest: unchanged		
Resistance to impact	Spring: 34 N Ball drop: 120 cm. / 3.9ft height of fall / 9.9 mm - 0.38 in. mark diameter	UNE EN 438-2:2005 Aptdo. 23	AIDIMA
Cigarette burns	Surface degradation		

## Materials

(MAXI) Maxi



Maxi is a composite material formed by PVC and vegetable fibers. Those fibers proceed from recycling of organic waste from agriculture. The waste reduction and the recycling of materials, help Maxi to fulfill the Emac®'s commitment with the Environment and the sustainable construction.

Maxi has an original finish, similar to wood and natural elements, which adapts to different decorative environments. The main advantage of this composite is that has the best qualities of PVC and vegetable fibers such as good mechanic strenght, abrasion resistance and dimensional stability among others.

(ALU) Aluminum



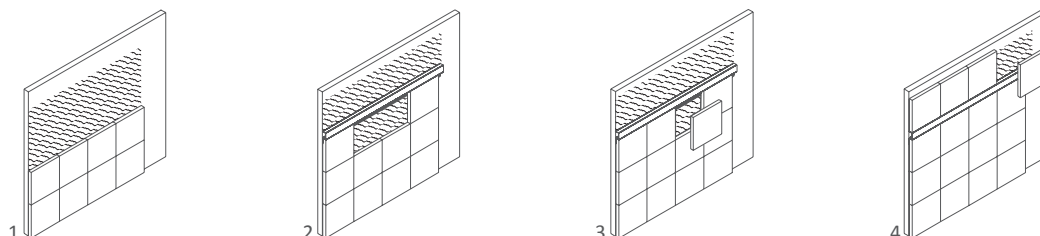
The anchoring wing of Novostil® MaxiKenya is made by aluminum extrusion. These profiles have been anodized, improving mainly by this process their corrosion and mechanical resistance and their appearance. The anodized applied, has the quality seal "Qualanod" which guarantees the quality of the process and the resulting profiles. This seal regulates several tests: appearance and color, thickness measurements, sealing and impregnation control, abrasion resistance, lightfastness, acetic saline chamber and nitric acid immersion.

Aluminum is a material with excellent chemical, physical and mechanical properties. It is lightweight, tough, ductile, malleable and highly durable.

## Placement

As listello

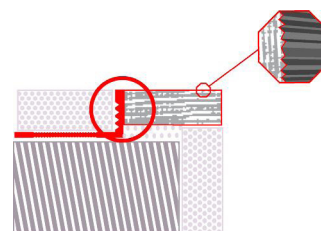
1. Spread a big amount of thin-set mortar on the riser.
2. Place the tiles on the riser and then press so they have an optimal adhesion.
3. Then, spread a big amount of thin-set mortar on the tread and align the profile on its vertex (Do not let overhang, the leverage may remove the profile and the tiles). Then press so the thin-set mortar could pass through the holes of the anchoring wing.
4. Place the tiles on the tread, aligning them with the profile to ensure a perfect adhesion.
5. Clean the possible remaining material and let dry.



*As stair nosing or  
worktop finish*

Novostil® MaxiKenya can be used as stair nosing or worktop finish. For this, the union between Maxi and the fixing wing must be reinforced with screws as it is shown in the drawing.

Emac® doesn't recommend using this profile as a stair nosing because it has not been designed for this purpose. There are other references in our catalogue specifically oriented to be installed in stairs. They are made of several materials, included Maxi and are the perfect solution.



However, if you decide to install the profile as a stair nosing, you must firstly reinforce the join between the two pieces of the profile through mechanical anchoring. Then, proceed as a regular installation of stair nosing:

1. Spread a big amount of thin-set mortar on the surface of the riser.
2. Place the tiles on the riser and press to get an optimal adherence.
3. Then, spread a big amount of thin-set mortar on the tread and align the profile on its vertex so it rests on the riser (Do not let overhang, the leverage may remove the step and the tiles). Then press so the thin-set mortar could pass through the mechanized holes of the anchoring wing.
4. Place the tile on the tread, align it to the profile and ensure a perfect adhesion.
5. Clean the possible leftover mortar and let dry.



### Warnings



- Part of the composition of Maxi and MaxiKenya is natural, so it may have differences in tone that **can not be considered** as manufacturing defects.
- It is recommended to take the profiles by its central part, avoiding taking them by the tops to avoid bending stresses which could cause scratches or breaks.
- Do not bend excessively the material. Store it **always** horizontally and in dry places.
- It must not be sanded, because that could affect to its surface appearance.
- It resists in moisture conditions but **it is no recommended** its use in submerged places.
- The range MaxiKenya is especially recommended for installations outdoors because it has an excellent weatherability and remains unalterable under sun exposure.

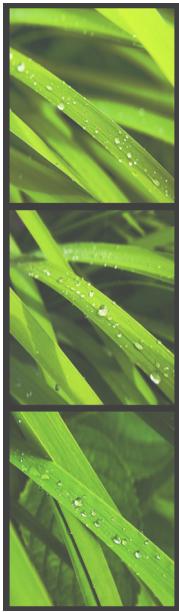
### Cleaning and maintenance

The cleaning of Novostil® MaxiKenya can be done with a cloth dampened with water or with neutral detergent 5%. The correct use of bleach doesn't affect the material. The use of chromic acid, sulfuric acid or polar solvents such as toluene or acetone is not recommendable to its cleaning.

Part of the anodized aluminium profile is visible on the face side. Therefore, in the cleaning of Novostil® MaxiKenya, alkaline, acid or carbonated solutions are not recommended.

Be specially careful with cleaners containing citric acid. Acids and strong bases could also damage the material as well as solvents containing haloalkanes or chlorinated solvents. It is not recommended the use of additives accelerants for curing containing chlorides because they could oxidize the material. Ensure to use special versions free of chlorides.

## Sustainable Commitment



Ecology Pack by Nerghal

In Emac® we are aware about the value of moving towards a sustainable and respectful commitment with the Environment. Therefore, in our commitment with nature, quality and service, in Emac® we work with the following principles:

- We collaborate with companies that use harmless products and raw materials in their production processes. They avoid so environmental risks in their processes and in the posterior transport.
- We develop innovative products that, plus solve the market requirements and fulfill the standards in the sector, doesn't damage the Environment and help to its conservation and care.
- We continue investigating new processes and materials which allow us to continue fulfilling our commitment.

As result of this commitment and the strong investment in R&D, arises Maxi. Our material has the best mechanical properties and functional requirements tested in different tests in specialized Institutions of each sector. The use of fibers proceeding from the recycling of organic waste of the Agriculture, shows that it's posible to obtain high-performance materials minimizing the environmental impact.

In the continuous search of excellence, Emac® continues betting every day on the innovation and quality of their products and the strict fulfilling of their Environmental and Quality policies.

## Technical information

You can find out more information about the technical features of Emac®'s products by downloading their Technical File from [www.emac.es](http://www.emac.es).

If you have any query please contact our Technical Department in [otecnica@emac.es](mailto:otecnica@emac.es).



Emac Complementos S.L. (Spain) [info@emac.es](mailto:info@emac.es) // EMAC AMERICA LLC (FL,USA) [sales@emac.es](mailto:sales@emac.es) [www.emac.es](http://www.emac.es)

*The data provided are for information only and have been obtained by our supplier or Emac®.  
Does not constitute legal guarantee in terms of properties and / or functionality of the application of material*



Outdoors



Indoors



Wall tiling



Flooring